



RUICHENG

INSTRUMENT CO., LTD.

**THE 2018 ANNUAL
PRODUCT CATALOGUE**

Biological Indicator Incubator

B80



Description:

- ◆ The B80 Biological Indicator Incubator is compact, versatile, reliable and easy to use. It is designed for single temperature incubation of the EO Biological Indicators. The thermometer is included with the incubator, providing easy verification of incubation temperature.

Features:

- ◆ Energy-efficient design.
- ◆ Applicable to 24V power adapter.
- ◆ Accurate to $\pm 0.3^{\circ}\text{C}$.
- ◆ Process of experiment is visible.
- ◆ Electronic calibration. User can reset to any local standard.
- ◆ Power supply provided is UL, CSA and CE approved.
- ◆ Custom blocks made to fit any sample holder.
- ◆ 12-month warranty.

Parameters:

Project	Parameters
Temp. control range	RT+5°C~100°C
Timing range	1min~99h
Display accuracy	0.1°C
Heating time	≤6min(20°C~56°C)
Voltage	DC24V/1.67A

Project	Parameters
Temp. accuracy	≤±0.3°C
Temp. uniformity	≤±0.3°C
Temp. stability	±0.3°C
Dimension(mm)	145×113×110
Weight(kg)	0.5

Optional Blocks:

Type	Diameter	Capacity
MD40	Φ10mm	15
MD41	Φ12mm	12
MD42	Φ15mm	8

Type	Diameter	Capacity
MD43	Φ16mm	8
MD45	Φ9mm	18
---	---	---



Hangzhou Ruicheng Instrument Co., Ltd

ADD: Building E, No. 8 of Houshan Road, Yuhang District, Hangzhou City, Zhejiang Province, China
 TEL: 86-571-88630940 FAX: 86-571-85126370 Email: sales2@ruiwell.com
<http://www.ruiwell.net>

Biological Indicator Incubator

Bit1000/Bit1000-S



Description:

- ◆ Bit1000/Bit1000-S is a sample incubation equipment based on film heating and PID automatic temperature control technology. Flexible independent timing and constant temperature function improve the efficiency of the laboratory work, which is the ideal equipment for biological indicators incubation.

Features:

- ◆ Easy to set up and use, all information real-time display and showing set up operation, convenient to observe equipment running status.
- ◆ High temperature control precision.
- ◆ Wide time range from 1min to 99h59min.
- ◆ Up to 7groups samples can be incubated. Each group countdowns independently at a time.
- ◆ Temperature calibration function.
- ◆ Built-in software and hardware over-temperature protection device.

Parameters:

Project	Parameters
Temp. setting range	0°C~100°C
Timing range	1min ~ 99h59min/∞
Display accuracy	0.1°C
Heating time	≤12min(from 25°C to 100°C)*
Power	150W
Fuse	250V 3A φ5×20
Weight(kg)	2.5

Project	Parameters
Temp. control range	RT+5°C~100°C
Temp. accuracy	±0.3°C*
Temp. uniformity	±0.3°C*
Auto running	Yes
Voltage	AC220V or AC110V, 50/60Hz
Dimension(mm)	260x195x150
---	---

Optional Blocks:

Type	Capacity	Remark
RC02 044 001	35xφ9mm	Only for Bit1000
RC02 044 003	28xφ12mm	Only for Bit1000-S

Type	Capacity	Remark
RC02 044 002	35xφ10mm	Only for Bit1000
---	---	---



Hangzhou Ruicheng Instrument Co., Ltd

ADD: Building E, No. 8 of Houshan Road, Yuhang District, Hangzhou City, Zhejiang Province, China
 TEL: 86-571-88630940 FAX: 86-571-85126370 Email: sales2@ruiwell.com
<http://www.ruiwell.net>

Dry Bath Incubator

DH100-1



Description:

◆ DH100 series high temperature Dry Bath Incubator controlled by microcomputer, use high purity aluminum material as a heat conduction medium instead of the traditional water bath device. It is easy to use, wide temperature range, high precision and etc. It can be widely used in the sample preservation, reaction of DNA amplification, electrophoresis, degeneration, solidification and other kinds of serum biochemical sample thermostatic incubation process.

Features:

- ◆ Real-time temperature display, the countdown display.
- ◆ Convenient block replacement, easy to clean and disinfect.
- ◆ Automatic fault detection and alarm function.
- ◆ Built-in over-temperature protection device.
- ◆ Temperature deviation calibration function.

Parameters:

Project	Parameters
Temp. control range	RT.+5°C -160°C
Temp. uniformity	±0.5°C
Display accuracy	0.1°C
Heating time	≤15min(from 25°C to 160°C)
Power	300W
Dimension(mm)	260×220×100

Project	Parameters
Temp. accuracy	±0.5°C(@40°C)
Temp. accuracy	±1°C(@120°C)
Timing range	1min-99h59min/∞
Block quantity	1
Voltage	AC220V or AC110V, 50/60Hz
Weight(kg)	5.0

Optional Blocks:

Type	Diameter	Capacity
MD01	6mm	48
MD02	7mm	48
MD03	10mm	24
MD04	12mm	24
MD05	13mm	24
MD06	15mm	16
MD07	16mm	16
MD08	19mm	12

Type	Diameter	Capacity
MD09	20mm	12
MD10	26mm	8
MD11	28mm	4
MD12	40mm	3
MD13	0.2ml centrifuge tube	48
MD14	0.5ml centrifuge tube	48
MD15	1.5ml centrifuge tube	24
MD16	2.0ml centrifuge tube	24



Hangzhou Ruicheng Instrument Co., Ltd

ADD: Building E, No. 8 of Houshan Road, Yuhang District, Hangzhou City, Zhejiang Province, China
TEL: 86-571-88630940 FAX: 86-571-85126370 Email: sales2@ruiwell.com
<http://www.ruiwell.net>

Dry Bath Incubator

DH100-2



Description:

◆ DH100 series high temperature Dry Bath Incubator controlled by microcomputer, use high purity aluminum material as a heat conduction medium instead of the traditional water bath device. It is easy to use, wide temperature range, high precision and etc. It can be widely used in the sample preservation, reaction of DNA amplification, electrophoresis, degeneration, solidification and other kinds of serum biochemical sample thermostatic incubation process.

Features:

- ◆ Real-time temperature display, the countdown display.
- ◆ Convenient block replacement, easy to clean and disinfect.
- ◆ Automatic fault detection and alarm function.
- ◆ Built-in over-temperature protection device.
- ◆ Temperature deviation calibration function.

Parameters:

Project	Parameters
Temp. control range	RT.+5°C -160°C
Temp. uniformity	±0.5°C
Display accuracy	0.1°C
Heating time	≤15min(from 25°C to 160°C)
Power	500W
Dimension(mm)	260×220×100

Project	Parameters
Temp. accuracy	±0.5°C(@40°C)
Temp. accuracy	±1°C(@120°C)
Timing range	1min-99h59min/∞
Block quantity	2
Voltage	AC220V or AC110V, 50/60Hz
Weight(kg)	5.5

Optional Blocks:

Type	Diameter	Capacity
MD01	6mm	48
MD02	7mm	48
MD03	10mm	24
MD04	12mm	24
MD05	13mm	24
MD06	15mm	16
MD07	16mm	16
MD08	19mm	12
MD09	20mm	12

Type	Diameter	Capacity
MD10	26mm	8
MD11	28mm	4
MD12	40mm	3
MD13	0.2ml centrifuge tube	48
MD14	0.5ml centrifuge tube	48
MD15	1.5ml centrifuge tube	24
MD16	2.0ml centrifuge tube	24
MD17	0.2ml well microplate	96
---	---	---



Hangzhou Ruicheng Instrument Co., Ltd

ADD: Building E, No. 8 of Houshan Road, Yuhang District, Hangzhou City, Zhejiang Province, China
 TEL: 86-571-88630940 FAX: 86-571-85126370 Email: sales2@ruiwell.com
<http://www.ruiwell.net>

Dry Bath Incubator

DH100-4



Description:

◆ DH100 series high temperature dry bath incubator controlled by microcomputer, use of high purity aluminum material as a heat conduction medium instead of the conditional water bath device. which is easy to use, wide temperature range, high precision and etc. Can be widely used in the sample preservation, reaction of DNA amplification, electrophoresis, degeneration, solidification and other kinds of serum biochemical sample thermostatic incubation process.

Features:

- ◆ Real-time temperature display, the countdown display.
- ◆ Convenient module replacement, easy to clean and disinfect.
- ◆ Automatic fault detection and alarm function.
- ◆ Built-in over temperature protection device.
- ◆ Temperature deviation calibration function.

Parameters:

Project	Parameters
Temp.Range	RT.+5C -130°C
Temp uniformity	±0.5°C
Display accuracy	0.1°C
Heating time	≤20 min (25°Cto130°C)
Max power	600W
Size(mm)	360×220×100

Project	Parameters
Temp accuracy	±0.5°C (@40°C)
Temp accuracy	±1°C (@120°C)
Time range	1-99h59min/∞
Block quantity	4
Voltage	220V 50/60Hz
Weight(kg)	8.0

Optional Blocks:

Type	Diameter of test tube	Number of test tube
MD01	6mm	48
MD02	7mm	48
MD03	10mm	24
MD04	12mm	24
MD05	13mm	24
MD06	15mm	16
MD07	16mm	16
MD08	19mm	12
MD09	20mm	12

Type	Diameter of test tube	Number of test tube
MD10	26mm	8
MD11	28mm	4
MD12	40mm	3
MD13	0.2ml centrifuge tube	48
MD14	0.5ml centrifuge tube	48
MD15	1.5ml centrifuge tube	24
MD16	2.0ml centrifuge tube	24
MD17	0.2ml well micro plate	96
---	---	---



Hangzhou Rui Cheng Instrument CO., LTD

ADD: Building E, No. 8 of Houshan Road, Yuhang District, Hangzhou City, Zhejiang Province, China
 TEL: 86-571-88630940 FAX: 86-571-85126370 Email:sales2@ruiwell.com
<http://www.ruiwell.net>

Dry Bath Incubator

Minibox



Description:

- ◆ Minibox is a microprocessor-controlled product. It is widely used in preservation and reaction of samples, DNA amplification and initial denaturation of electrophoresis and so forth. It fits almost anywhere and can even be used in cars, boats or wherever a 24 volt power source is available.

Features:

- ◆ Energy-efficient design.
- ◆ Applicable to 24V power adapter.
- ◆ Accurate to $\pm 0.3^{\circ}\text{C}$.
- ◆ Process of experiment is visible.
- ◆ Electronic calibration. User can reset to any local standard.
- ◆ Power supply provided is UL, CSA and CE approved.
- ◆ Custom blocks made to fit any sample holder.
- ◆ 12-month warranty.

Parameters:

Project	Parameters
Temp. control range	RT.+5 $^{\circ}\text{C}$ ~100 $^{\circ}\text{C}$
Timing range	1min~99h
Display accuracy	0.1 $^{\circ}\text{C}$
Heating time	$\leq 20\text{min}$ (from 40 $^{\circ}\text{C}$ to 100 $^{\circ}\text{C}$)
Dimension(mm)	145 \times 113 \times 110

Project	Parameters
Temp. accuracy	$\leq \pm 0.3^{\circ}\text{C}$
Temp. uniformity	$\leq \pm 0.3^{\circ}\text{C}$
Temp. stability	$\pm 0.3^{\circ}\text{C}$
Voltage	DC24V/1.67A
Weight(kg)	0.5

Optional Blocks:

Type	Description
MiniBoxA	15 \times 2.0ml
MiniBoxB	15 \times 1.5ml
MiniBoxC	24 \times 0.5ml

Type	Description
MiniBoxD	32 \times 0.2ml
MiniBoxF	32 \times 0.2ml
---	---



Dry Bath Incubator

Minibox-C



Description:

- ◆ Minibox-C is a microprocessor-controlled product. It is widely used in preservation and reaction of samples, DNA amplification and initial denaturation of electrophoresis and so forth. It fits almost anywhere and can even be used in cars, boats or wherever a 24 volt power source is available.

Features:

- ◆ Energy-efficient design.
- ◆ Applicable to 12V power adapter.
- ◆ Accurate to $\pm 0.3^{\circ}\text{C}$.
- ◆ Process of experiment is visible.
- ◆ Electronic calibration. User can reset to any local standard.
- ◆ Power supply provided is UL, CSA and CE approved.
- ◆ Custom blocks made to fit any sample holder.
- ◆ 12-month warranty.

Parameters:

Project	Parameters
Temp. setting range	$0^{\circ}\text{C}\sim 100^{\circ}\text{C}$
Timing range	1sec ~ 99min59sec/ ∞ or 1min~ 99h59min/ ∞
Display accuracy	0.1°C
Heating time	$\leq 20\text{min}$ (from 25°C to 100°C)*
AUTO-4 $^{\circ}\text{C}$	Yes*
Multi points running	Yes(Max 5 points)
Auto running	Yes
Auto resume to run	Yes
Voltage	DC12V/5A
Dimension(mm)	145x113x140

Project	Parameters
Temp. control range	RT.- $15^{\circ}\text{C}\sim 100^{\circ}\text{C}$
Temp. accuracy	$\leq \pm 0.3^{\circ}\text{C}$ *
Temp. uniformity	$\leq \pm 0.3^{\circ}\text{C}$ *
Cooling time	$\leq 20\text{min}$ (from 100°C to 25°C)*
Cooling time	$\leq 25\text{min}$ (from RT. to RT.- 15°C)*
Multi cycle	Yes(Max 99 times)
Auto heating	Yes
Power	60W
Weight(kg)	1.0

Test condition: RT $25^{\circ}\text{C}\pm 2^{\circ}\text{C}$, block is 15x1.5ml, use mercurial thermometer, accuracy is $\pm 0.1^{\circ}\text{C}$.

Optional Blocks:

Type	Description
MiniBoxA	15x2.0ml
MiniBoxB	15x1.5ml
MiniBoxC	24x0.5ml

Type	Description
MiniBoxD	32x0.2ml
MiniBoxF	32x0.2ml(for assay strip)
---	---



Hangzhou Ruicheng Instrument Co., Ltd

ADD: Building E, No. 8 of Houshan Road, Yuhang District, Hangzhou City, Zhejiang Province, China
 TEL: 86-571-88630940 FAX: 86-571-85126370 Email: sales2@ruiwell.com
<http://www.ruiwell.net>

Dry Bath Incubator

DH300



Description:

- ◆ DH300 is microprocessor controlled Dry Bath Incubator. Instead of traditional water bath device, the heat-conducting medium is high purity aluminum. The exact desired temperature is easily set using the arrow keys on the sloped control panel while values are shown on the large digital display. No checking of a thermometer and readjusting temperature is necessary. The user calibration feature allows for easy calibration to in house standards when required.

This product can be widely used in preservation and reaction of samples, DNA amplification, electrophoresis denaturation and serum solidification, etc.

Features:

- ◆ LCD display.
- ◆ Automatic fault detection and buzzer alarm function
- ◆ Temperature calibration function.
- ◆ Easy replacement and cleaning of block.
- ◆ Built-in over-temperature protection.
- ◆ Optional power automatical recover and boot automatically run function.
- ◆ Multiple safety protection. Safe and reliable with CE standard.
- ◆ Customed blocks are accepted.
- ◆ 12-month warranty.

Parameters:

Project	Parameters
Temp. setting range	0°C~100°C
Timing range	1min ~ 99h59min/∞
Display accuracy	0.1°C
Heating time	≤12min(from 25°C to 100°C)*
Multi points running circularly	Yes(Max 99 times)
Auto running	Yes
Power	150W
Fuse	250V 3A φ5×20
Weight(kg)	2.5

Project	Parameters
Temp. control range	RT+5°C~100°C
Temp. accuracy	±0.3°C*
Temp. uniformity	±0.3°C*
Multi points running	Yes(Max 5points)
Auto heating	Yes
Auto resume to run	Yes
Voltage	AC220V or AC110V, 50/60Hz
Dimension(mm)	260x195x150

Test condition: RT25°C±2°C, block is 35×1.5ml, use mercurial thermometer, accuracy is ±0.1°C.

Optional Blocks:

Type	Description
MD30	96×0.2ml
MD31	54×0.5ml
MD32	35×1.5ml
MD33	35×2.0ml
MD34	15×0.5ml+20×1.5ml

Type	Description
MD35	96×0.2ml(elisa plate)
MD36	24×5ml
MD37	15×10ml
MD38	12×15ml
MD39	6×50ml



Chilling/Heating Dry Bath

DC10



Description:

- ◆ The DC10 Chilling/Heating Dry Bath is compact, versatile, reliable and easy to use. It uses high quality Peltier plate to ensure long-term stable operation and controlled. It can be widely used in preservation and reaction of samples, DNA amplification, electrophoresis denaturation and serum solidification, etc.

Applications:

- ◆ Maintaining 14°C for ligation reactions.
- ◆ Maintaining 17°C for storing oocytes.
- ◆ Storing samples at ice bucket temperatures.
- ◆ Storing enzymes or DNA libraries at work station.
- ◆ Transport samples from the field at exactly the right temperature.
- ◆ Chilling or heating samples in the field.
- ◆ Enzyme reactions and deactivations.
- ◆ Freezing and storing most any small sample at work station.
- ◆ PCR sample preparation.

Parameters:

Project	Parameters
Temp. setting range	-10°C~100°C
Timing range	1min ~ 99h59min/∞
Display accuracy	0.1°C
Heating time	≤10min(from 25°C to 100°C)*
AUTO-4°C	Yes*
Multi points running	Yes(Max 5 points)
Auto running	Yes
Auto resume to run	Yes
Voltage	AC100~240V, 50/60Hz
Dimension(mm)	260x195x150

Test condition: RT25°C±2°C, block is 35X1.5ml, use mercurial thermometer, accuracy is ±0.1°C.

Optional Blocks:

Type	Description
MD30	96×0.2ml
MD31	54×0.5ml
MD32	35×1.5ml
MD33	35×2.0ml
MD34	15×0.5ml+20×1.5ml

Features:

- ◆ Energy-efficient Peltier design.
- ◆ Automatic fault detection and buzzer alarm function.
- ◆ Electronic calibration. User can reset to any local standard.
- ◆ Small, compact size uses very little bench space.
- ◆ Easy replacement, cleaning and disinfecting for blocks.
- ◆ Built-in over-temperature protection.
- ◆ Internal power supply provided is UL, CSA and CE approved.
- ◆ Customed blocks are accepted.
- ◆ Buzzer alarm when temperature control ends.
- ◆ 12-month warranty.

Project	Parameters
Temp. control range	RT.-30°C~100°C
Temp. accuracy	±0.3°C*
Temp. uniformity	±0.3°C*
Cooling time	≤10min(from 100°C to 25°C)*
Cooling time	≤25min(from RT. to RT.-30°C)*
Multi cycle	Yes(Max 99 times)
Auto heating	Yes
Power	150W
Fuse	250V 3A Φ5×20
Weight(kg)	4.5
---	---

Type	Description
MD35	96×0.2ml(elisa plate)
MD36	24×5ml
MD37	15×10ml
MD38	12×15ml
MD39	6×50ml



Hangzhou Ruicheng Instrument Co., Ltd

ADD: Building E, No. 8 of Houshan Road, Yuhang District, Hangzhou City, Zhejiang Province, China
 TEL: 86-571-88630940 FAX: 86-571-85126370 Email: sales2@ruiwell.com
<http://www.ruiwell.net>

Dry Bath Incubator(heating lid)

ES1000

Description:

- ◆ ES1000 Dry Bath Incubator with heating lid is an incubation based on semiconductor heating refrigeration technology and PID automatic temperature control technology. Timing flexible, constant temperature function and multi-points operating mode are effectively improving the efficiency of the laboratory work. It is the ideal equipment, applying to kinds of sample incubation, catalyze, save and etc.

Features:

- ◆ Easy to set up and convenient to observe equipment running status.
- ◆ High temperature control precision.
- ◆ The temperature of Heating lid can be controlled.
- ◆ Temperature calibration function.
- ◆ Built-in software and hardware over temperature protection device, will use more reliable.
- ◆ Support blocks classification custom calibration function.
- ◆ Support automatic preheating/automatic power recovery/automatic running function.



Parameters:

Project	Parameters	
Block	ES series	ESC series
Temp. setting range	0°C~100°C	-10°C~100°C
Temp. control range	RT+5°C~100°C	RT.-25°C~100°C
Temp. accuracy	±0.3°C@37°C*	±0.3°C@37°C*
Temp. uniformity	±0.3°C@37°C*	±0.3°C@37°C*
Display accuracy	0.1°C	0.1°C
Timing range	1sec~99h59min/∞	1sec~99h59min/∞
Heating time	≤12min(from 25°C to 100°C)*	≤12min(from 25°C to 100°C)*
Cooling time	---	≤12min(from 100°C to 25°C)*
Cooling time	---	≤25min(from RT. to RT.-25°C)*
Heating lid temp setting range	OFF~ +10°C	OFF~ +10°C
Heating lid temp accuracy	±0.5°C*	±0.5°C*
Heating lid heating time	≤10min(from 25°C to 100°C)*	≤10min(from 25°C to 100°C)*
Storage at 4°C	---	Yes
Power	150W	150W
Voltage	AC110 or AC220V/50-60HZ	AC110 or AC220V/50-60HZ
Fuse	250V 3A Φ5×20	250V 3A Φ5×20
Dimension(mm)	300×200×210	300×200×210
Weight(kg)	4.0	4.7

Optional Blocks:

Type	Capacity	Temp. range	Type	Capacity	Temp. range
ESC-01	35x2.0ml centrifuge tube	RT-25°C~100°C	ES-06	35x2.0ml centrifuge tube	RT+5°C~100°C
ESC-02	35x1.5ml centrifuge tube	RT-25°C~100°C	ES-07	35x1.5ml centrifuge tube	RT+5°C~100°C
ESC-03	54x0.5ml centrifuge tube	RT-25°C~100°C	ES-08	54x0.5ml centrifuge tube	RT+5°C~100°C
ESC-04	96x0.2ml PCR centrifuge tube	RT-25°C~100°C	ES-09	96x0.2ml PCR centrifuge tube	RT+5°C~100°C
ESC-05	96x0.2ml Elisa plate	RT-25°C~100°C	ES-10	96x0.2ml Elisa plate	RT+5°C~100°C



Thermo Shaker

TS100



Description:

- ◆ TS100 Thermo Shaker is a temperature controlled shaker, which is used for a variety of molecular biology applications. Speed, time and temperature settings are continuously visible on the LCD, simultaneously showing both actual and selected values. Integral over-temperature control ensures long time, safety and sample integrity.

Application:

- ◆ Storing samples at ice bucket temperatures.
- ◆ Storing enzymes or DNA libraries at work station.
- ◆ Transporting samples from the field at exactly the right temperature.
- ◆ Heating samples in the field.
- ◆ Enzyme reactions and deactivations.
- ◆ PCR sample preparation.

Features:

- ◆ LCD display. It is easy to setup and use.
- ◆ Reliable design with inner extra temperature protection.
- ◆ Each thermo shaker is equipped with lifter that is easy to replace different blocks.
- ◆ Digital accuracy and convenience.
- ◆ Precision wells for uniform thermal transfer.
- ◆ Assorted blocks for a wide variety of tube sizes.
- ◆ Brushless DC Motor: noiseless long service life maintenance-free.
- ◆ Conform to CE safety standard.
- ◆ Accurately control and display time, temperature and speed.
- ◆ 12-month warranty.

Parameters:

Project	Parameters
Temp. setting range	0°C~100°C
Timing range	1min ~ 99h59min/∞
Display accuracy	0.1°C
Shaking speed	200~1800rpm
Heating time	≤12min(from 25°C to 100°C)*
Multi cycle	Yes(Max 99times)
Auto running	Yes
Power supply	150W
Fuse	250V 3A Φ5×20
Weight(kg)	7.0

Project	Parameters
Temp. control range	RT+5°C~100°C
Temp. accuracy	±0.3°C*
Temp. uniformity	±0.3°C*
Orbit	3mm
Multi points running	Yes(Max 5points)
Auto heating	Yes
Auto resume to run	Yes
Voltage	AC220V or AC110V, 50/60Hz
Dimension(mm)	260x195x150

Test condition: RT25°C±2°C, block is 35x1.5ml, use mercurial thermometer, accuracy is ±0.1°C.

Optional Blocks:

Type	Description	Temp range	Max Speed
MD30	96×0.2ml	0°C~100°C	1800rpm
MD31	54×0.5ml	0°C~100°C	1800rpm
MD32	35×1.5ml	0°C~100°C	1800rpm
MD33	35×2.0ml	0°C~100°C	1800rpm
MD34	15×0.5ml+20×1.5ml	0°C~100°C	1800rpm

Type	Description	Temp range	Max Speed
MD35	96×0.2ml(elisa plate)	0°C~100°C	1800rpm
MD36	24×5ml	0°C~100°C	1000rpm
MD37	15×10ml	0°C~100°C	1000rpm
MD38	12×15ml	0°C~100°C	1000rpm
MD39	6×50ml	0°C~100°C	800rpm



Hangzhou Ruicheng Instrument Co., Ltd

ADD: Building E, No. 8 of Houshan Road, Yuhang District, Hangzhou City, Zhejiang Province, China
 TEL: 86-571-88630940 FAX: 86-571-85126370 Email: sales2@ruiwell.com
<http://www.ruiwell.net>

Thermo Shaker

TCS10



Description:

- ◆ TCS10 Thermo Shaker is a temperature controlled shaker, which is used for a variety of molecular biology applications. Speed, time and temperature settings are continuously visible on the LCD, simultaneously showing both actual and selected values. Integral over-temperature control ensures long time, safety and sample integrity.

Application:

- ◆ Maintaining 14°C for ligation reactions.
- ◆ Maintaining 17°C for storing oocytes.
- ◆ Storing samples at ice bucket temperatures.
- ◆ Storing enzymes or DNA libraries at work station.
- ◆ Transporting samples from the field at exactly the right temperature.
- ◆ Heating samples in the field.
- ◆ Enzyme reactions and deactivations.
- ◆ PCR sample preparation.

Features:

- ◆ LCD display. It is easy to setup and use.
- ◆ Reliable design with inner extra temperature protection.
- ◆ Each thermo shaker is equipped with lifter that is easy to replace different blocks.
- ◆ Digital accuracy and convenience.
- ◆ Precision wells for uniform thermal transfer.
- ◆ Assorted blocks for a wide variety of tube sizes.
- ◆ Brushless DC Motor: noiseless long service life maintenance-free.
- ◆ Conform to CE safety standard.
- ◆ Accurately control and display time, temperature and speed.

Parameters:

Project	Parameters
Temp. setting range	0°C~100°C
Timing range	1min ~ 99h59min/∞
Display accuracy	0.1°C
Shaking speed	200~1500rpm
Heating time	≤15min(from 25°C to 100°C)*
Multi point running	Yes(Max 5points)
Multi cycle	Yes(Max 99times)
Auto running	Yes
Storage at 4°C	Yes
Voltage	AC110V~220V/50-60Hz
Dimension(mm)	260x195x150

Project	Parameters
Temp. control range	RT.-20°C~100°C
Temp. accuracy	±0.3°C*
Temp. uniformity	±0.3°C*
Orbit	3mm
Cooling time1	≤10min(from 100°C to 25°C)*
Cooling time 2	≤15min(from RT. to RT.- 20°C)
Auto heating	Yes
Auto resume to run	Yes
Power supply	150W
Fuse	250V 3A Φ5×20
Weight(kg)	7.5

Test condition: RT25°C±2°C, block is 35X1.5ml, use mercurial thermometer, accuracy is ±0.1°C.

Optional Blocks:

Type	Description	Temp range	Max Speed
MD30	96×0.2ml	0°C~100°C	1500rpm
MD31	54×0.5ml	0°C~100°C	1500rpm
MD32	35×1.5ml	0°C~100°C	1500rpm
MD33	35×2.0ml	0°C~100°C	1500rpm
MD34	15×0.5ml+20×1.5ml	0°C~100°C	1500rpm

Type	Description	Temp range	Max Speed
MD35	96×0.2ml(elisa plate)	0°C~100°C	1500rpm
MD36	24×5ml	0°C~100°C	1000rpm
MD37	15×10ml	0°C~100°C	1000rpm
MD38	12×15ml	0°C~100°C	800rpm
MD39	6×50ml	0°C~100°C	800rpm



Hangzhou Ruicheng Instrument Co., Ltd

ADD: Building E, No. 8 of Houshan Road, Yuhang District, Hangzhou City, Zhejiang Province, China
 TEL: 86-571-88630940 FAX: 86-571-85126370 Email: sales2@ruiwell.com
<http://www.ruiwell.net>

Sample Concentrator

ND100-1



Description:

◆ ND100-1 Sample Concentrator is with microprocessor controlled and PID fuzzy controlled technique. Instead of traditional water bath device, the heat-conducting medium is high purity aluminum. The Test tubes are held in a block, and blowing a large number of samples at one time. It can be used in residue analysis, commodity inspection, food, environment, pharmacy and biological product and other industries.

Features:

- ◆ High precision and wide range of temp control.
- ◆ Blowing a large number of samples at one time.
- ◆ Blowing each sample independently.
- ◆ Amount of airflow can be adjusted.
- ◆ Easy operation; safe and reliable to use.
- ◆ 12-month warranty.

Parameters:

Project	Parameters
Temp. control range	RT.+5°C-160°C
Temp. uniformity	≤±0.5°C
Display accuracy	0.1°C
Heating time	≤15min(from 25°C to 160°C)
Nitrogen flow rate	15L/min
Nitrogen pressure	0.02Mpa(Gas needle≤16pcs) 0.05Mpa(Gas needle>16pcs)
Max power	300W
Dimension(mm)	260x220x450

Project	Parameters
Temp. accuracy	±0.5°C(@40°C)
Temp. accuracy	±1°C(@120°C)
Timing range	1min-99h59min/∞
Needle length	150mm
Block quantity	1
Voltage	AC220V or AC110V, 50/60Hz
Weight(kg)	7.0
---	---

Optional Blocks:

Type	Diameter	Capacity
MD03	10mm	24
MD04	12mm	24
MD05	13mm	24
MD06	15mm	16
MD07	16mm	16
MD08	19mm	12

Type	Diameter	Capacity
MD09	20mm	12
MD10	26mm	8
MD11	28mm	4
MD12	40mm	3
MD15	1.5ml(centrifuge tube)	24
MD16	2.0ml(centrifuge tube)	24



Hangzhou Ruicheng Instrument Co., Ltd

ADD: Building E, No. 8 of Houshan Road, Yuhang District, Hangzhou City, Zhejiang Province, China
 TEL: 86-571-88630940 FAX: 86-571-85126370 Email: sales2@ruiwell.com
<http://www.ruiwell.net>

Sample Concentrator

ND100-2



Description:

- ◆ ND100-2 Sample Concentrator is with microprocessor controlled and PID fuzzy controlled technique. Instead of traditional water bath device, the heat-conducting medium is high purity aluminum. The Test tubes are held in a block, and blowing a large number of samples at one time. It can be used in residue analysis, commodity inspection, food, environment, pharmacy and biological product and other industries.

Features:

- ◆ High precision and wide range of temp control.
- ◆ Blowing a large number of samples at one time.
- ◆ Blowing each sample independently.
- ◆ Amount of airflow can be adjusted.
- ◆ Easy operation; safe and reliable to use.
- ◆ 12-month warranty.

Parameters:

Project	Parameters
Temp. control range	RT.+5°C-160°C
Temp. uniformity	≤±0.5°C
Display accuracy	0.1°C
Heating time	≤15min(from 25°C to 160°C)
Nitrogen flow rate	15L/min
Nitrogen pressure	0.02Mpa(Gas needle≤16pcs) 0.05Mpa(Gas needle>16pcs)
Max power	500W
Dimension(mm)	260x220x450

Project	Parameters
Temp. accuracy	±0.5°C(@40°C)
Temp. accuracy	±1°C(@120°C)
Timing range	1min-99h59min/∞
Needle length	150mm
Block quantity	2
Voltage	AC220V or AC110V, 50/60Hz
Weight(kg)	7.5
---	---

Optional Blocks:

Type	Diameter	Capacity
MD03	10mm	24
MD04	12mm	24
MD05	13mm	24
MD06	15mm	16
MD07	16mm	16
MD08	19mm	12

Type	Diameter	Capacity
MD09	20mm	12
MD10	26mm	8
MD11	28mm	4
MD12	40mm	3
MD15	1.5ml(centrifuge tube)	24
MD16	2.0ml(centrifuge tube)	24



Hangzhou Ruicheng Instrument Co., Ltd

ADD: Building E, No. 8 of Houshan Road, Yuhang District, Hangzhou City, Zhejiang Province, China
 TEL: 86-571-88630940 FAX: 86-571-85126370 Email: sales2@ruiwell.com
<http://www.ruiwell.net>

Sample Concentrator

ND200-1



Description:

- ◆ ND200-1 Sample Concentrator is with microprocessor controlled and PID fuzzy controlled technique. Instead of traditional water bath device, the heat-conducting medium is high purity aluminum. The Test tubes are held in a block, and blowing a large number of samples at one time. It can be used in residue analysis, commodity inspection, food, environment, pharmacy and biological product and other industries.

Features:

- ◆ High precision and wide range of temp control.
- ◆ Blowing a large number of samples at one time.
- ◆ Blowing each sample independently.
- ◆ Amount of airflow can be adjusted.
- ◆ Easy operation; safe and reliable to use.
- ◆ 12-month warranty.

Parameters:

Project	Parameters
Temp. control range	RT.+5°C-160°C
Temp. uniformity	±0.5°C
Display accuracy	0.1°C
Heating time	≤15min(from 25°C to 160°C)
Nitrogen flow rate	15L/min
Nitrogen pressure	0.1Mpa
Max power	300W
Dimension(mm)	260x220x475

Project	Parameters
Temp. accuracy	±0.5°C(@40°C)
Temp. accuracy	±1°C(@120°C)
Timing range	1min-99h59min/∞
Needle length	150mm
Block quantity	1
Voltage	AC220V or AC110V, 50/60Hz
Weight(kg)	6.0
---	---

Optional Blocks:

Type	Diameter	Capacity
MD50	10mm	12
MD51	12mm	12
MD52	13mm	12
MD53	15mm	12

Type	Diameter	Capacity
MD54	16mm	12
MD55	19mm	12
MD56	20mm	12
---	---	---



Hangzhou Ruicheng Instrument Co., Ltd

ADD: Building E, No. 8 of Houshan Road, Yuhang District, Hangzhou City, Zhejiang Province, China
 TEL: 86-571-88630940 FAX: 86-571-85126370 Email: sales2@ruiwell.com
<http://www.ruiwell.net>

Sample Concentrator

ND200-2



Description:

- ◆ ND200-2 Sample Concentrator is with microprocessor controlled and PID fuzzy controlled technique. Instead of traditional water bath device, the heat-conducting medium is high purity aluminum. The Test tubes are held in a block, and blowing a large number of samples at one time. It can be used in residue analysis, commodity inspection, food, environment, pharmacy and biological product and other industries.

Features:

- ◆ High precision and wide range of temp control.
- ◆ Blowing a large number of samples at one time.
- ◆ Blowing each sample independently.
- ◆ Amount of airflow can be adjusted.
- ◆ Easy operation; safe and reliable to use.
- ◆ 12-month warranty.

Parameters:

Project	Parameters
Temp. control range	RT.+5°C-160°C
Temp. uniformity	≤±0.5°C
Display accuracy	0.1°C
Heating time	≤15min(from 25°C to 160°C)
Nitrogen flow rate	15L/min
Nitrogen pressure	0.1Mpa
Max power	500W
Dimension(mm)	260x220x475

Project	Parameters
Temp. accuracy	±0.5°C(@40°C)
Temp. accuracy	±1°C(@120°C)
Timing range	1min-99h59min/∞
Needle length	150mm
Block quantity	2
Voltage	AC220V or AC110V, 50/60Hz
Weight(kg)	7.5
---	---

Optional Blocks:

Type	Diameter	Capacity
MD50	10mm	12
MD51	12mm	12
MD52	13mm	12
MD53	15mm	12

Type	Diameter	Capacity
MD54	16mm	12
MD55	19mm	12
MD56	20mm	12
---	---	---

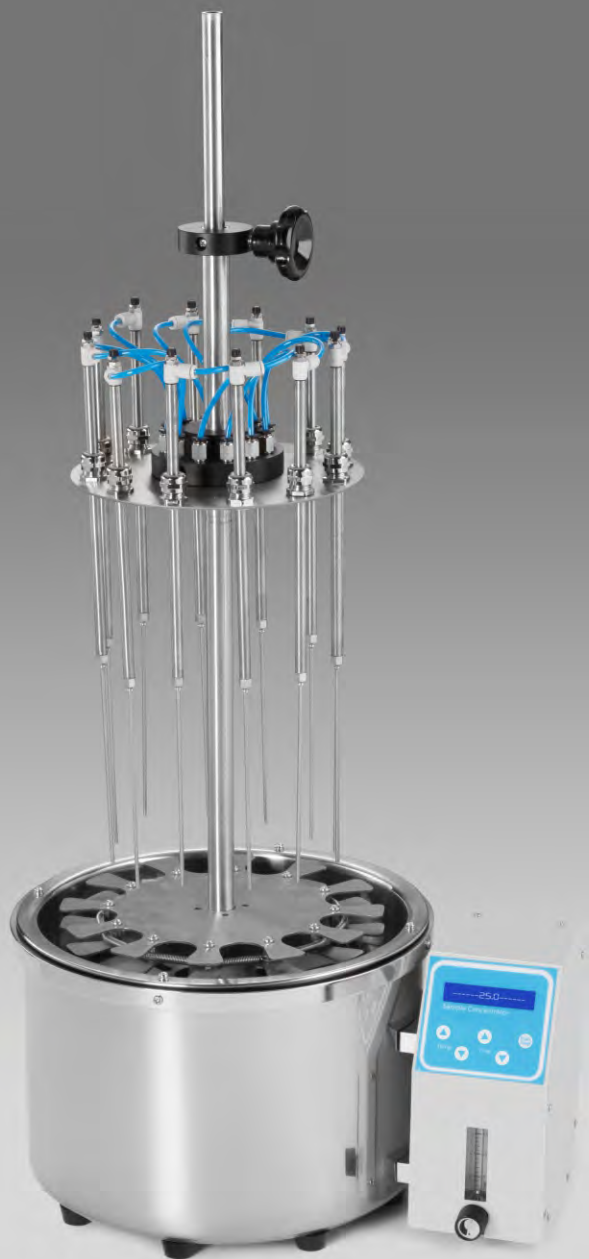


Hangzhou Ruicheng Instrument Co., Ltd

ADD: Building E, No. 8 of Houshan Road, Yuhang District, Hangzhou City, Zhejiang Province, China
TEL: 86-571-88630940 FAX: 86-571-85126370 Email: sales2@ruiwell.com
<http://www.ruiwell.net>

Sample Concentrator

WD1000



Description:

WD1000 Water Bath Sample Concentration consists of a base and supporting assembly, sample holder and gas distribution system. Test tubes are placed by a spring-loaded sample holder and support tray. The gas passes through the flow meter to the distribution system. Flexible tubing leads gas to valve-tube assemblies at each position. Depending on the test-tube size and solvent volume, they can be individually raised or lowered to the correct height. Needles blow gas onto the surface of the solution resulting in rapid evaporation of the solvent.

Features:

- ◆ LCD display, easy operation; safe and reliable to use.
- ◆ Water bath provides gentle heat.
- ◆ Accommodates sample in tubes(diameter 10~29mm), volume(1~ 50ml).
- ◆ 12positions, each position is numbered.
- ◆ Blowing each sample independently.
- ◆ With liquid-level sensor, have alarming function when dry heating.
- ◆ The lifting needle valve controls the gas consumption at each position.
- ◆ All parts are anti-corrosion, durable in use, easy to clean.

Parameters:

Project	Parameters
Temp. range	RT.+5°C~99°C
Time range	1min~99h59min/∞
Display accuracy	0.1°C
Temp accuracy	±1°C
Temp uniformity	±1°C (@60°C)
Heating time	≤30min (40°C-99°C)
Samples position	12positions
Dimension(mm)	390×300×850

Project	Parameters
Tube size	φ10~φ29(liquid volume 1ml~50ml)
Max vertical travel	200mm
Max gas pressure	200Kpa
Max gas usage	15L/min
Gas joint diameter	φ8mm
Power	1000W
Fuse	250V 8A φ5×20
Weight(kg)	10



Hangzhou Ruicheng Instrument Co., Ltd

ADD: Building E, No. 8 of Houshan Road, Yuhang District, Hangzhou City, Zhejiang Province, China
TEL: 86-571-88630940 FAX: 86-571-85126370 Email: sales2@ruiwell.com
<http://www.ruiwell.net>

Bacti-cinerator Sterilizer

IS800-A



Description:

- ◆ IS800-A Bacti-cinerator Sterilizer is used in degassing for inoculating loops and needles, instead of alcohol lamps. Due to its convenience, sterilizer is widely used in the environment of biological safety cabinet, the exhaust fan, purification table and mobile van.

Application:

Widely used in biosafety cabinets, clean bench, near exhaust fan, mobile vehicles, even outdoor and other other severe environment.

Features:

- ◆ Safety, convenient. Totally take the place of alcohol lamps.
- ◆ Only 5-7 seconds are needed, because of its highest temperature of 825°C.
- ◆ Smart, light, easy to handle.
- ◆ Can be used in anaerobic chamber.
- ◆ Podzolic organics prevent pollutions effectively.
- ◆ Smart technique makes it possible to use for a long time and much safer.
- ◆ 6-month warranty.

Parameters:

Project	Parameters
Max. temp. in central zone	825°C±25°C
Length of heating zone	140mm
Ambient temperature	5°C~40°C
Voltage	AC220V or AC110V, 50/60Hz
Dimension(mm)	120×155×180

Project	Parameters
Max. outer diameter of sterilization goods	Φ15mm
Heating time	15min
Fuse	250V 3A Φ5×20
Power	150W
Weight(kg)	1.0



Hangzhou Ruicheng Instrument Co., Ltd

ADD: Building E, No. 8 of Houshan Road, Yuhang District, Hangzhou City, Zhejiang Province, China
TEL: 86-571-88630940 FAX: 86-571-85126370 Email: sales2@ruiwell.com
<http://www.ruiwell.net>

Bacti-cinerator Sterilizer

IS800-B



Description:

- ◆ IS800-B Bacti-cinerator Sterilizer is used in degassing for inoculating loops and needles, instead of alcohol lamps. Due to its convenience, sterilizer is widely used in the environment of biological safety cabinet, exhaust fan, purification table and mobile van.

Application:

Widely used in biosafety cabinets, clean bench, near exhaust fan, mobile vehicles, even outdoor and other other severe environment.

Features:

- ◆ Safety, convenient. Totally take the place of alcohol lamps.
- ◆ Only 5-7 seconds are needed, because of its highest temperature of 825°C.
- ◆ Smart, light, easy to handle.
- ◆ Can be used in anaerobic chamber.
- ◆ Podzolic organics prevent pollutions effectively.
- ◆ Smart technique makes it possible to use for a long time and much safer.
- ◆ 6-month warranty.

Parameters:

Project	Parameters
Max. temp. in central zone	825°C±25°C
Length of heating zone	100mm
Ambient temperature	5°C~40°C
Voltage	AC220V or AC110V, 50/60Hz
Dimension(mm)	130×120×200

Project	Parameters
Max. outer diameter of sterilization goods	Φ35mm
Heating time	15min
Fuse	250V 3A Φ5×20
Power	250W
Weight(kg)	1.3



Hangzhou Ruicheng Instrument Co., Ltd

ADD: Building E, No. 8 of Houshan Road, Yuhang District, Hangzhou City, Zhejiang Province, China
TEL: 86-571-88630940 FAX: 86-571-85126370 Email: sales2@ruiwell.com
<http://www.ruiwell.net>

Hybridization Instrument

SH2000



Description:

- ◆ SH2000 Hybridization Instrument can be setting constant temperature, time and etc. Instead of manual operation experiment, the accuracy of experiment is higher and result is more reliable than traditional manual experiment. Hybridization and degeneration can be operated at same time, which reduces experimental procedure and improves efficiency and accuracy of operation.

Features:

- ◆ This instrument is adopted FISH processing step, which can reduce a lot of manual operating time and avoid the damage of harmful reagent.
- ◆ Touch screen allows for easy to read, program and use.
- ◆ Automatic power recovery function.
- ◆ Automatic cooling function after running over.
- ◆ Automatic warm-up function.
- ◆ Platform high precision of temperature control, low fluctuation.
- ◆ Can deal with 12 slides.
- ◆ Support 105 custom programs stored functions.
- ◆ Three operation modes: denaturation & hybridization, hybridization, multiple-step operation.

Parameters:

Project	Parameters
Temp. control range	RT+5 °C~100 °C
Temp. setting range	0°C~100°C
Timing range	1min ~ 99h59min
Temp. accuracy	±1°C
Temp. uniformity	±1°C
Heating time	≤2min (from 37°C to 95°C)

Project	Parameters
Cooling time	≤6min (from 95°C to 45°C)
Capacity	12 Slides
Power	350W
Voltage	AC220V or AC110V, 50/60Hz
Dimension(mm)	440x220x120
Weight(kg)	4.5



Incubator for Microplates

DH400



Description:

- ◆ DH400 Incubator for Microplates is a kind of microprocessor controlled and PID controlled incubator. It is compact, versatile, reliable and easy to use, mainly used in elisa plates(96/384 wells) or tissue culture plates(24/48/96 wells, etc) for samples cultivation of incubation.

Application:

Cytochemistry---for in situ reactions.
Immunochemistry---for immunofluorescent reactions.
Biochemistry---for enzyme and protein analysis.
Molecular biology---for micro array analysis.

Features:

- ◆ LCD display.
- ◆ Easy to operate with one-touch knob.
- ◆ Microprocessor and temperature controlled with good liner, small fluctuations.
- ◆ Double heating system ensures the stability of incubation.
- ◆ Internal power supply provided is UL, CSA and CE approved.
- ◆ 12-month warranty.

Parameters:

Project	Parameters
Temp. control range	RT.+5℃ ~80℃
Temp. accuracy	±0.5℃
Temp. uniformity	±0.5℃
Max. height of plate	22mm
Voltage	AC220V or AC110V, 50/60Hz
Dimension(mm)	280×270×140

Project	Parameters
Timing range	1min ~ 99h59min
Display accuracy	0.1℃
Heating time	≤10min(from 25℃ to 80℃)
Capacity	2plates
Power	120W
Weight(kg)	4.0



Hangzhou Ruicheng Instrument Co., Ltd

ADD: Building E, No. 8 of Houshan Road, Yuhang District, Hangzhou City, Zhejiang Province, China
TEL: 86-571-88630940 FAX: 86-571-85126370 Email: sales2@ruiwell.com
<http://www.ruiwell.net>

Shaker for Microplates

MS100



Description:

Features:

- ◆ MS100 Shaker for Microplates is a type of high speed shaker, which is with brushless DC motor and microprocessor controlled technique, specially for elisa plates(96/384 wells), tissue culture plates(24/ 48/96 wells).
- ◆ LCD display system status and parameters.
- ◆ Stable and reliable shaking.
- ◆ Easy to operate with one touch knob.
- ◆ Automatic fault detection and buzzer alarm function.
- ◆ 12-month warranty.

Parameters:

Project	Parameters
Timing range	1min ~ 99h59min
Mixing orbit	3mm
Sample capacity	4plates
Voltage	AC100V~240V, 50/60Hz
Weight(kg)	4.0

Project	Parameters
Shaking speed	200~1500rpm
Speed step value	10rpm
Power	45W
Dimension(mm)	280×270×110
---	---



Shaker for Microplates

TS200



Description:

- ◆ TS200 Shaker for Microplates is with technique of direct brushless DC motor and PID intelligent temperature control. It is mainly used for shaking and cultivation in elisa plates (96/384 wells), tissue culture plates(24/48/96 wells).

Application:

- ◆ Maintaining 14°C for ligation reactions.
- ◆ Maintaining 17°C for storing oocytes.
- ◆ Storing samples at ice bucket temperatures.
- ◆ Storing enzymes or DNA libraries at your work station.
- ◆ Transporting samples from the field at exactly the right temperature.
- ◆ Heating samples in the field.
- ◆ Enzyme reactions and deactivations.
- ◆ PCR sample preparation.

Features:

- ◆ LCD displays system status and parameters.
- ◆ Stable and reliable operation with high quality switch.
- ◆ Easy to operate with one touch knob.
- ◆ Setup the time within 0~100 hours, instrument will make alarm voice when completing.
- ◆ With power recovery, instrument will continue to run when power recovers from outage.
- ◆ 12-month warranty.

Parameters:

Project	Parameters
Temp. control range	RT.+5°C~80°C
Shaking speed	200-1600rpm
Temp. accuracy	±0.5°C
Temp. uniformity	±0.5°C
Sample capacity	2pcs microplates or culture plates
Power	150W
Dimension(mm)	280×270×140

Project	Parameters
Timing range	1min ~ 99h59min
Mixing orbit	3mm
Display accuracy	0.1°C
Heating time	≤10min (from RT. to 80°C)
Heating	Heating film
Voltage	AC100V~240V 50/60Hz
Weight(kg)	7.0



Orbital Shaker

MPS-10



Description:

- ◆ MPS-10 Orbital Shaker is a high speed shaker with direct brushless DC motor and microprocessor controlled technique. It can be applicable in different laboratories: in microbiology, biotechnology, medical analysis, etc.

Features:

- ◆ LCD displays time and shaking speed.
- ◆ Easy to operate with one-touch knob.
- ◆ Warm root and variety of platforms can be chosen.
- ◆ When time control ends, instrument will make alarm voice.
- ◆ Gentle and reliable shaking with direct brushless DC motor.
- ◆ 12-month warranty.

Parameters:

Project	Parameters
Timing range	1min ~ 99h59min
Orbit	10mm
Capacity(PP-2 tray)	6×100ml or 4×250ml conical flask
Power	45W
Dimension(mm)	280×270×110

Project	Parameters
Shaking speed	50~300rpm
Capacity(PP-1 tray)	8pcs petri dishes
Capacity(PP-3 tray)	12×100ml or 6×250ml conical flask
Voltage	AC100V~240V, 50/60Hz
Weight(kg)	7.0



Multi-tube Vortexer

MS200



Description:

- ◆ MS200 Multi-tube Vortexer is with technique of brushless DC motor and microprocessor controlled technique. Unique knob operation is easy to use. It can maximum process 50 samples at once. A variety of test tube foam racks can be selected to meet the mixing needs of different test tubes. It can be widely used in the biotechnology, microbiology, medical analysis and other industries.

Features:

- ◆ Easy to operate with one-touch knob.
- ◆ 1min~99h59min time range, automatic warning sound when finish working.
- ◆ A variety of test tube foam racks for option to meet the mixing needs of different test tubes.
- ◆ Soft start, uniform acceleration, effectively avoid samples splashing.
- ◆ Brushless DC motor: precise shaking speed, long service life maintenance-free.
- ◆ Process up to 50 samples at once to make the experiment more convenient and efficient.
- ◆ Microprocessor control, simple operation panel, LED displays for speed and time.
- ◆ Humanized program design, built-in short mix and timing operation modes.

Parameters:

Project	Parameters
Shaking speed	500~2500rpm
Orbit	4mm
Power	70W
Dimension(mm)	410x276x432

Project	Parameters
Timing range	1min ~ 99h59min
Max load(kg)	4.5
Voltage	AC100V~240V, 50/60Hz
Weight(kg)	20

Optional foam racks:

Type	Foam rack	Test tube
MS200-T10	50x ϕ 10mm	ϕ 9~ ϕ 10mm
MS200-T12	50x ϕ 12mm	ϕ 11~ ϕ 13mm
MS200-T15	50x ϕ 15mm	ϕ 14~ ϕ 17mm

Type	Foam rack	Test tube
MS200-T20	50x ϕ 20mm	ϕ 18~ ϕ 21mm
MS200-T25	15x ϕ 25mm	ϕ 24~ ϕ 27mm
MS200-T29	15x ϕ 29mm	ϕ 28~ ϕ 32mm



Hangzhou Ruicheng Instrument Co., Ltd

ADD: Building E, No. 8 of Houshan Road, Yuhang District, Hangzhou City, Zhejiang Province, China
TEL: 86-571-88630940 FAX: 86-571-85126370 Email: sales2@ruiwell.com
<http://www.ruiwell.net>

Mini-centrifuge

MC6000



Description:

- ◆ MC6000 Mini-centrifuge standard configuration includes two rotors.
8x1.5ml rotors max accommodate 8x 1.5/2.0ml centrifuge tubes; if use random equipped with 0.2ml or 0.5ml tube sets, also can use 0.2ml or 0.5ml tubes on this product.
4x8x0.2ml rotors accommodate 4x8 x0.2ml PCR special tubes.
Two kinds of rotor both can be used in experiments on micro centrifugation, cell separation and quickly separating from the test tube wall and etc.

Features:

- ◆ Small volume, light weight
- ◆ 1.5ml rotors accommodate 8x1.5/2.0/0.5/0.2ml centrifugal test tubes.
- ◆ 8-place rotors accommodate 32x0.2ml centrifugal test tubes.
- ◆ Use flip type switch function, automatically stop when open the cover. The cover is made by composite material which is not easily broken.

Parameters:

Project	Parameters
Dimension(mm)	160×150×125
Capacity(standard rotor)	8×1.5/2.0/0.5/0.2ml
Weight(kg)	0.9
Max(RCF)	2000g

Project	Parameters
Voltage	AC100-240V, 50/60Hz
Capacity(8-strip rotor)	4×8×0.2ml
Speed	6000rpm
Power	≤50W



Incubator for Microplates

DH500



Description:

- ◆ DH500 Incubator for Microplates which PID fuzzy control technology can be accurate to ensure the temperature control precision and automatically adjust the heating rate, reduce waiting time. It is the ideal automation tool for samples hatching, catalytic reaction process of preserving, blending, save and etc.

Features:

- ◆ Easy to set up and use, all information real-time display and showing set up operation, convenient to observe equipment running status.
- ◆ Support standard microplates and deep well plates.
- ◆ Automatic preheating function.
- ◆ Automatic power recovery function.
- ◆ Temperature calibration function.
- ◆ Built-in software and hardware over temperature protection device, will use more reliable.

Parameters:

Project	Parameters
Temp. setting range	0°C~80°C
Temp. control range	RT+5°C~80°C
Timing range	1min ~ 99h59min/∞
Temp. accuracy	±0.5°C*
Display accuracy	0.1°C
Temp uniformity	±0.5°C*
Heating time	≤10min(from 25°C to 80°C)*

Project	Parameters
Auto preheating	Yes
Auto resume to run	Yes
Capacity	4microplates or deep well plates
Power supply	300W
Voltage	AC220V or AC110V, 50/60Hz
Dimension(mm)	340x320x200
Weight(kg)	6.5



Thermo Shaker for Microplates

TS300



Description:

- ◆ TS300 Thermo Shaker for Microplates is a multipurpose thermostatic shaker controlled by brushless DC motor and PID intelligent temperature control technology. The PID fuzzy control technology can be accurate to ensure that the temperature control precision and automatically adjust the heating rate, reduce waiting time. TS300 combines constant temperature and oscillation perfectly together, greatly shorten the experimental operation time, which is the ideal automation tool for samples hatching, catalytic reaction process of preserving, blending, save and etc.

Features:

- ◆ Easy to set up and use, all information real-time display and showing set up operation, convenient to observe equipment running status.
- ◆ Support standard microplates and deep well plates.
- ◆ Brushless DC motor, low noise, small interference, free maintenance.
- ◆ Automatic preheating function.
- ◆ Automatic power recovery function.
- ◆ Temperature calibration function.
- ◆ Built-in software and hardware over temperature protection device, will use more reliable.

Parameters:

Project	Parameters
Temp. setting range	0°C~80°C
Temp. control range	RT+5°C~80°C
Timing range	1min ~ 99h59min/∞
Temp. accuracy	±0.5°C*
Display accuracy	0.1°C
Temp uniformity	±0.5°C*
Shaking speed	300~1350rpm
Orbit	3mm

Project	Parameters
Auto preheating	Yes
Auto resume to run	Yes
Capacity	4microplates or deepwell plates
Power supply	300W
Voltage	AC220V or AC110V, 50/60Hz
Heating time	≤10min(from 25°C to 80°C)*
Dimension(mm)	340x320x200
Weight(kg)	9.5



Hangzhou Ruicheng Instrument Co., Ltd

ADD: Building E, No. 8 of Houshan Road, Yuhang District, Hangzhou City, Zhejiang Province, China
TEL: 86-571-88630940 FAX: 86-571-85126370 Email: sales2@ruiwell.com
<http://www.ruiwell.net>

Centrifuge for Microplate

MPC2800



Description:

- ◆ MPC2800 Centrifuge for Microplate is designed for quick spins of samples in PCR plates. Primarily designed for use with 96 or 384 well plates and small volumes, it accepts skirted, non skirted and semi skirted styles.

Features:

- ◆ Easy to use, real-time display of all operating information.
- ◆ Countdown mode support
- ◆ DC brushless motor, low noise, small interference, maintenance-free.
- ◆ When open the cap, it will stop running automatically.
- ◆ Fast acceleration from standstill to maximum speed fully in just 10sec.
- ◆ Braking time is short, from the highest speed to a complete standstill in just 4sec.

Parameters:

Project	Parameters
Rotating speed	2200~2800rpm
Timing range	15sec~1min59sec
Max(RCF)	550g
Acceleration time	≤10sec(from 0 to 2800rpm)
Brake time	≤4sec(from 2800rpm to 0)
Dimension(mm)	260x240x226
Weight(kg)	3.3

Project	Parameters
Lid open auto stop	Yes
Short run	Yes
Capacity	2 PCR plates
Power	45W
Voltage	AC110~220V/50-60Hz
Fuse	250V/3A Φ5×20
---	---



Semi-Automated Plate Sealer

ASP1000

Description:

- ◆ ASP1000 Semi-Automated Plate Sealer is used for sealing a wide variety of microplates (Elisa, cell culture, PCR and deep-well plates) to store samples, prevent evaporation and minimize contamination. It is applicable for a variety of heat seals, meeting any laboratory application, including PCR, colorimetric, fluorescence, long term storage. A plate sensing system allows to provide uniform force, transferring heat evenly to the sealing surface whether using PCR plates or deep-well plates.

Features:

Safety

- ◆ If a hand or objects stuck in the drawer when it's moving, the drawer motor will reverse automatically. This feature prevent both user and the unit from injury.
- ◆ Special and smart design on the drawer, it can be detached from the main device.

Power save mode

If the unit is left on but inactive for long periods, it will enter a power saving mode.

- ◆ When the unit is inactive for 60min, it will switch into stand-by mode. Then the temperature will be reduced to 60C to save power.
- ◆ When the unit is inactive for 120min, it will switch into Power-Save mode. The display and heating element will be switched off. The user can awaken the unit by pressing any button.



- ◆ Rapid heating(reaching 170°C in 300seconds)
- ◆ Adjustable Sealing Temperature: 80°C ~170°C
- ◆ OLED display screen, high light.
- ◆ Applicable for different micro plates and heat seals.
- ◆ Precise temperature, timing and pressure for consistent sealing.
- ◆ Compact footprint: only 178mm wide x 370mm depth

Parameters:

Project	Parameters
Display	OLED
Temperature accuracy	±1°C
Sealing time	0.5s~10s(increment of 0.1s)
Power	300W
Weight(kg)	11.46
Compatible plate materials	PP(Polypropylene) PS(Polystyrene) PE(Polystyrene)
Compatible Sealing Film Types	Foil-polypropylene laminate Clear polyester-polypropylene laminate Clear polymer Thin clear polymer

Project	Parameters
Sealing temperature	OFF, 80°C~200°C(increment of 1.0°C)
Temperature uniformity	±1°C
Seal plate height	9~48mm
Voltage	AC110V or 220V/50-60HZ
Dimension(mm)	370x178x330
Compatible plate types	Standard Assay Plates Deep-well Storage Plates PCR Plates: skirted, semi-skirted, non-skirted
---	---





HANGZHOU RUICHENG INSTRUMENT CO., LTD.

We run our company with the idea of "to be honest, to be positive". We devote to offering the best products and service to our customers and believe that high quality products and service are the best things to our customers.

Everyday we do our jobs rigorously and efficiently. We hope each of us will be proud of our products and service.

ADD: Building E, No.8 of Houshan Road, Yuhang District, Hangzhou City,
Zhejiang Province, China

TEL: 86-571-88630940

FAX: 86-571-85126370

EMAIL: info@ruiwell.com sales2@ruiwell.com

WEBSITE: www.ruiwell.net www.ruiwell.com